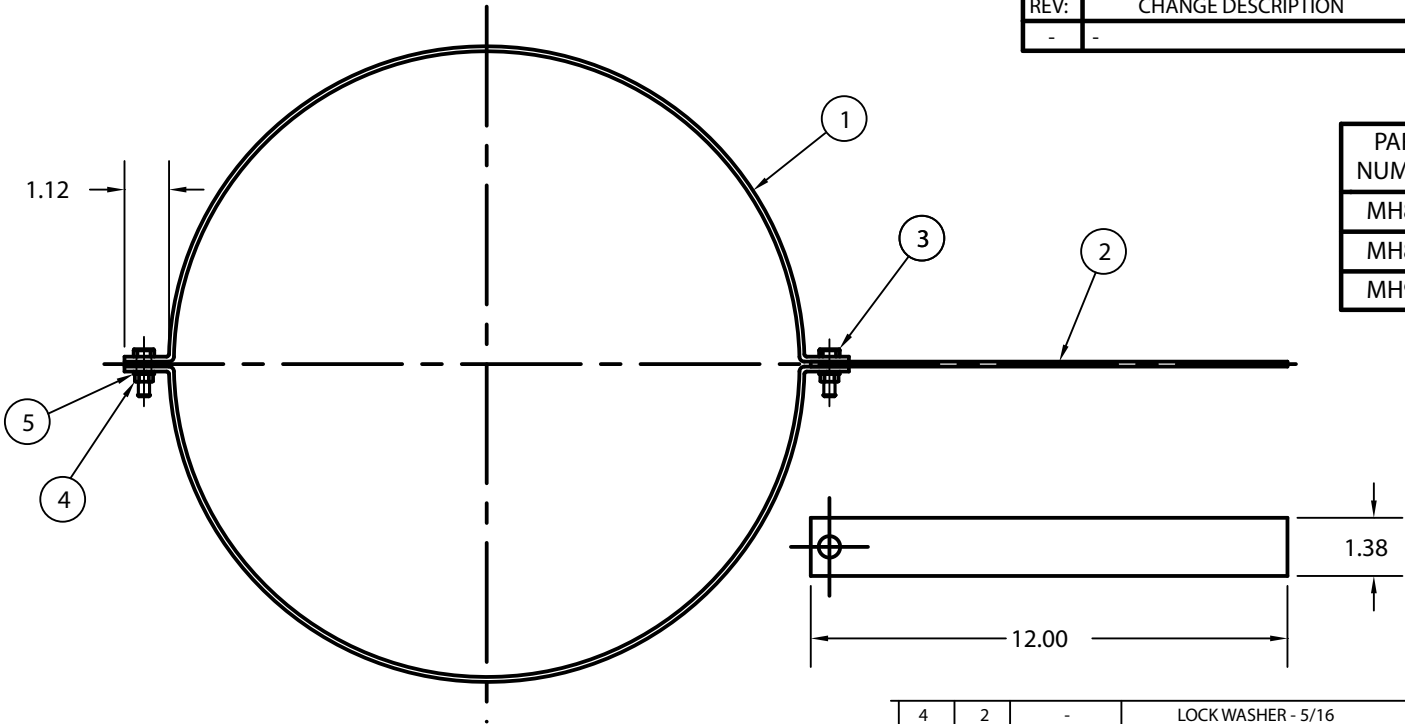


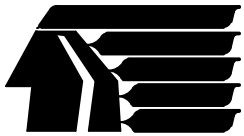
REVISION RECORD		
REV:	CHANGE DESCRIPTION	BY / DATE
-	-	MM 05-10-04



PART NUMBER	"A" DIA.
MH800	8.00
MH850	8.50
MH900	9.00

ITEM	QTY	PART NO.	DESCRIPTION	FINISH
4	2	-	LOCKWASHER - 5/16	*
4	2	-	HEX NUT x 5/16-18	*
3	2	-	HEX HEAD BLT - 5/16-18 x 1.00	*
2	1	-	HANGER	*
1	2	-	CLAMP HALVES	*

MATERIAL LIST



Ottawa Products Co.

1602 S. North Curtice Rd.
Curtice, Oh. 43412
www.ottawaproducts.com

MATERIAL:

CLAMP HALVES: C1008/C1010 H.R.P.O. x 11 GA.
HANGER: C1008/C1010 H.R.P.O. x 8 GA

*** FINISH: PER CUSTOMER REQUIREMENTS**

This print or drawing shall be used only with reference to contracts or proposals of Ottawa Products Co., Inc. This print or drawing shall not be copied for, reproduced for, nor exhibited to outside parties. This print or drawing and any and all copies thereof shall be returned to Ottawa Products Co. upon request. Anything disclosed herein not publicly available shall not be used without written permission of Ottawa Products Co. Ottawa Products Co. reserves the right to change specifications and/or designs without prior notice or obligation.

3RD ANGLE
PROJECTION



UNLESS
OTHERWISE SPEC.
DIMS. IN INCHES
ANSI V14.5-1982
W.P.S. 1-1-A-100

STD. TOLERANCES
.XX ±.12
.XXX ±.060
FRAC. DIM. ± 1/32

SCALE: NONE

CUSTOMER

-

TITLE

HANGER

DRAWN BY:

MANNY MOLINA

DATE:

1-19-05

CHECKED BY:

R.D. MILLER

DATE:

1-24-05

CUST. APPROVAL

N/A

DATE:

DRAWING NUMBER

MH SERIES

REV

-